



MONTHLY MEMBERSHIP PROGRESS REPORT

District 2 A2

Results as of: 02/28/2018

GMT: JOE AL PICONE

LOCATION TEXAS

GMT CA

Clubs			
RESULTS FOR 2017-2018			
QUARTER	NEW CLUB GOAL	NEW CLUBS	DROPPED CLUBS
JULY/AUG/SEPT	0	0	0
OCT/NOV/DEC	1	0	0
JAN/FEB/MAR	0	0	0
APR/MAY/JUNE	0	0	0

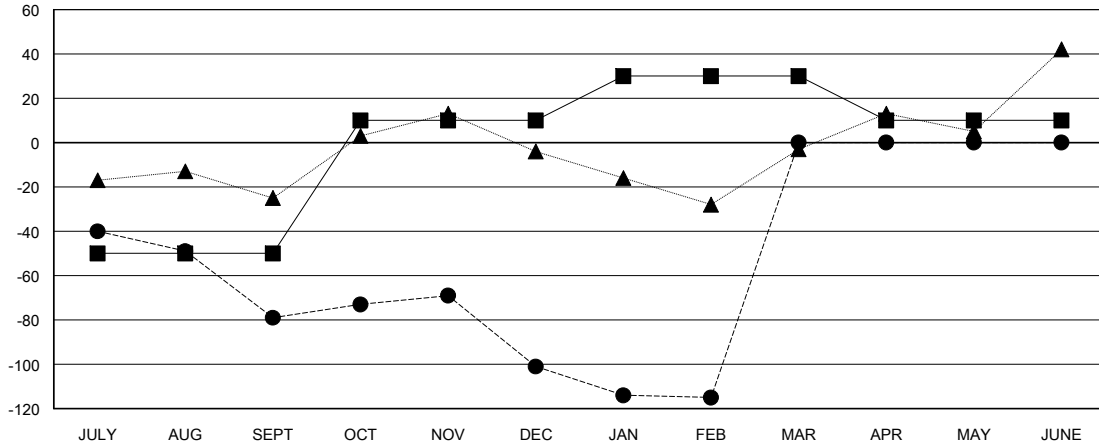
Members			
RESULTS FOR 2017-2018			
QUARTER	MEMBER GROWTH NET GOAL	MEMBER GROWTH ACTUAL	DROPPED MEMBERS ACTUAL (including transfers)
JULY/AUG/SEPT	-50	39	115
OCT/NOV/DEC	60	58	74
JAN/FEB/MAR	20	21	33
APR/MAY/JUNE	-20	0	0

GOALS AND ACTUAL NEW CLUBS CUMULATIVE



- - CURRENT YEAR GOALS FOR NEW CLUBS
- - CURRENT YEAR ACTUAL NEW CLUBS
- ▲ - LAST YEAR ACTUAL NEW CLUBS

GOALS AND ACTUAL MEMBERS CUMULATIVE



- - MEMBER GROWTH NET GOAL
- - MEMBER GROWTH ACTUAL
- ▲ - LAST YEAR MEMBERSHIP ACTUAL

DROPPED CLUBS: 0

29 CLUBS OF 65 ADDED 1 OR MORE NEW MEMBERS

GENDER DISTRIBUTION	
MALE	1,038 (61.68%)
FEMALE	645 (38.32%)
Women Percentage Fiscal Year Goal: 40%	

DROPPED MEMBERS	
DECEASED	17
CLUB CANCELLED	0
OTHER	205
TOTAL	222

[CLICK HERE FOR CUMULATIVE MEMBERSHIP DATA](#)

TOTAL FAMILY UNIT MEMBERS	286
FAMILY MEMBERS PAYING HALF DUES	146